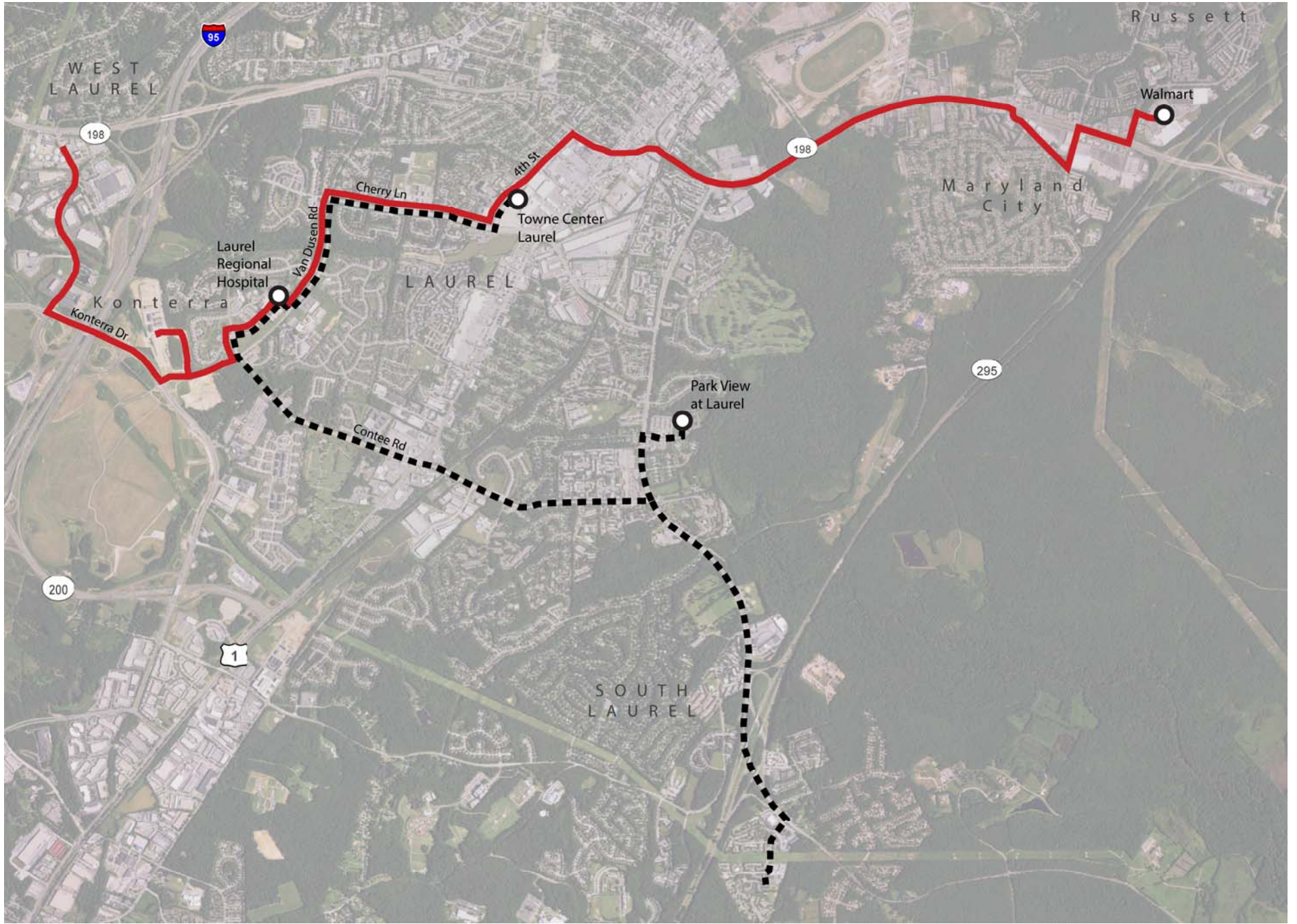
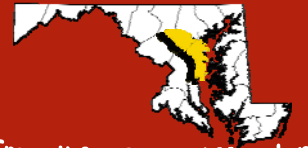


ROUTE 301A KONTERRA TO MARYLAND CITY



----- Existing Route 301A ——— Proposed Route 301A ○ Key Time Point

	Existing	Proposed	Service Notes:
Service Days & Hours			
Days	M - Sat	Same	• Service will be extended to West Laurel, Konterra, Maryland City, and Russett.
Hours			
Weekday	6:30 am - 7:20 pm	Same	• Service to South Laurel will be discontinued.
Saturday	9:25 am - 7:20 pm	Same	
Sunday	-	-	• Ride time between West Laurel and Walmart will be approximately 30 minutes.
Frequency of Service			
Weekday	60 min	Same	
Saturday	60 min	Same	
Sunday	-	-	



Anne Arundel County



Howard County



Prince George's County



City of Laurel



RTA of Central Maryland

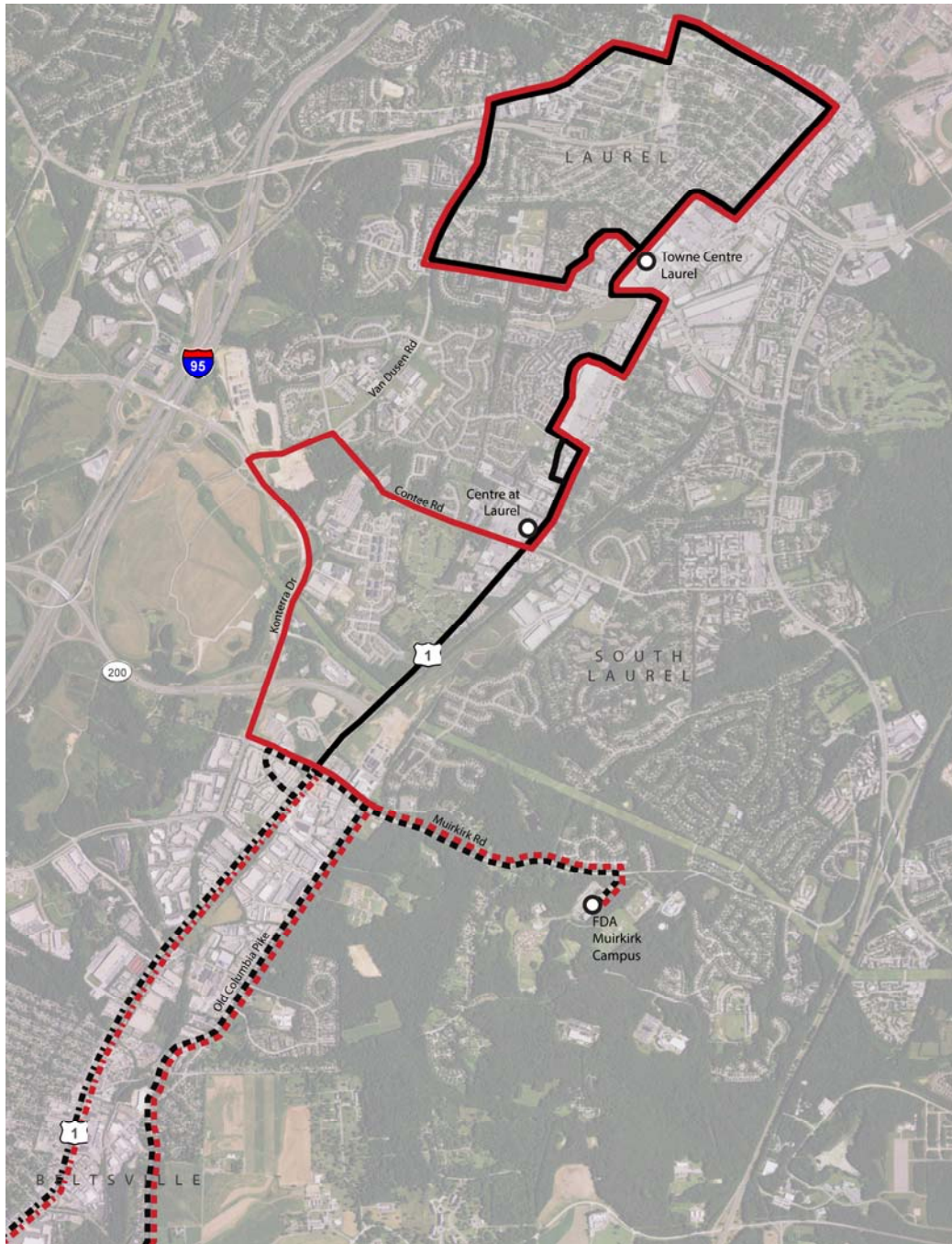


**Central Maryland
Transit Development**

Planning the Future of Transit in Our Region

ROUTE 302G

TOWNE CENTRE LAUREL TO COLLEGE PARK METRO STATION



- Existing Route 302G
- ⋯ Existing Route 302G - Weekday Only
- · - Existing Route 302G - Weekend Only
- Proposed Route 302G
- ⋯ Proposed Route 302G - Weekday Only
- · - Proposed Route 302G - Weekend Only
- Key Time Point

Service Days & Hours

	Existing	Proposed
Days	M - Sun	Same
Hours		
Weekday	6:00 am - 9:15 pm	Same
Saturday	9:00 am - 7:15 pm	Same
Sunday	10:00 am - 6:50 pm	Same

Frequency of Service

Weekday	60 min	Same
Saturday	60 min	Same
Sunday	60 min	Same

Service Notes:

- Service will be extended to Konterra.
- Route will operate along Cherrywood Lane and Old Columbia Pike on weekdays and weekends.
- Greenbelt Metro Station will be served on weekends only.
- Ride time from Towne Centre Laurel to College Park Metro Station will be a approximately 45 minutes.



Anne Arundel County



Howard County



Prince George's County



City of Laurel



RTA of Central Maryland



**Central Maryland
Transit Development**

Planning the Future of Transit in Our Region